

RIGID DUMP TRUCK



Specifications

Max. Gross Weight	347,715 lbs (112,690 kg)
Gross Engine Power	1,050 hp (783 kW)
Max. Payload	100 tons (691 t)
Heaped Capacity	74.5 yd ³ (57.0 m ³)

Features

- Rugged construction for reliability and long life
- High capacity body with large target-area for easy loading
- Long life emission-certified engine with exceptional fuel economy
- Dual-retardation gives operator the choice of using the oil cooled disc brakes or the hydrodynamic retarder for faster haul times
- Steps and full size doors on both side of the cab offers ease of access
- Class leading rimpull for exceptional climbing performance –
Optional drive line ratios for job specific performance

WORKS FOR YOU.™

SPECIFICATIONS

Engine

Engine	Detroit Diesel MTU 16V-2000TA DDEC		
Type	4 Cycle, Turbocharged / charge air cooled		
Gross power @ 2,100 rpm (SAE J1995)	1,050 hp (783 kW)		
Net power @ 2,100 rpm	943 hp (703 kW)		
Engine requires no deration up to 10,200 ft (3,110 m) altitude. Engine emission meets Tier 2 USA EPA/CARB MOH 40 CFR 89.			
Maximum torque @ 1,350 rpm	3,4209 lbf ft (4,461 Nm)		
Cylinders/Configuration	16V		
Bore x stroke	5.12 x 5.91 in (130 x 150 mm)		
Displacement	1,945 in ³ (31.9 L)		
24 volt negative ground electrical system. Four 12 volt 210 Ah batteries with master disconnect switch. Two 8.9 kW electric starter. Neutral start. 70A alternator with integral voltage regulator.			

Transmission

Allison M8610 with CEC 2 Shift Manager Program, Automatic Electronic Control. Remote mounted in the frame with integral TC 890 torque converter and planetary gearing. Six speeds forward, one reverse. Automatic lock-up in all speed ranges. Downshift inhibitor. Hydraulic retarder. Speeds with standard planetary:

	Forward						Reverse
Gear	1 st	2 nd	3 rd	4 th	5 th	6 th	R1
Ration	4.24	2.32	1.69	1.31	1.00	0.73	5.75
mph	5.1	9.3	12.8	16.6	21.6	30.1	3.8
km/h	8.2	15.0	20.6	26.7	34.8	48.5	6.0

Frame

Full box section frame rails, integral front bumper, closed-loop crossmember and torque tubes of 42,000 psi (290 MPa) yield strength steel. Crossmember connections are 95,000 psi (655 MPa) steel castings.

Suspension

Front: Terex manufactured kingpin strut-type independent front wheel suspension using self-contained, variable rate, nitrogen/oil cylinders.

Rear: Variable rate nitrogen/oil cylinders with A-frame linkage and lateral stabilizer bar.

Maximum strut stroke:	Front	9.25 in (235 mm)
	Rear	6.90 in (175 mm)
Maximum rear axle oscillation	± 7.0°	

Drive Axle

Heavy duty axle with full floating axle shafts, single reduction spiral bevel gear differential, and planetary reduction at each wheel.

Ratios:	Standard	Optional
Differential	2.16:1	2.16:1
Planetary	13.75:1	10.50:1
Total Reduction	29.70:1	22.68:1



Tires

Standard: front and rear	27.00 R49	rim width 19.5"
Consult tire manufacturers for optimum tire selection and correct ton-mile/h (t-km/h) capacity for application. Tires subject to availability.		

Brakes

Service – All hydraulic brake system control. Transmission mounted pressure compensating piston pump provides hydraulic pressure for brakes and steering. Independent circuits front and rear. Each circuit incorporates a nitrogen/hydraulic accumulator which stores energy to provide instant braking response.

Front:	Dry disc, diameter	38" (965 mm)
	Pad area, total	320 in ² (2,015 cm ²)

Rear: Terex oil cooled, multiple disc, completely sealed from dirt and water.

Breaking surface, total	13,573 in ² (87,567 cm ²)
-------------------------	--

Parking – Rear brakes applied by spring loaded opposing piston on disc pack, hydraulically released.

Retardation – Modulated lever control of rear disc brakes or hydraulic retarder in transmission. 1,234hp (920 kW) continuous retardation.

Secondary Brake System – Park push button solenoid control applies service and parking brakes. Automatically applies when engine is switched off. Parking brake applies when system pressure falls below a pre-determined level.

Brakes conform to ISO 3450

Steering

Independent hydrostatic steering with closed-center steering valve, accumulator and pressure compensating piston pump. Accumulator provides uniform steering regardless of engine speed. In the event of loss of engine power it provides steering of approximately two lock-to-lock turns. A low pressure indicator light warns of system pressure below 1,200 psi (83 bar).

Steering conforms to ISO 5010

Maximum Tire Steering Angle	39°
-----------------------------	-----

Hoist

Two body hoists mounted inside the frame rails. Hoists are two stage with power down in the second stage. The body hydraulic system is independent of the steering hydraulic system.

System Relief Pressure	2,750 lbf/in ² (190 bar)
Body hydraulic pump flow rate @ 2,100 rpm engine	97 gpm (365 L/min)
Body raise / lower time	16.3 seconds / 18.0 seconds

SPECIFICATIONS

TR100

Body

Longitudinal 'V' type floor with integral transverse box-section stiffeners. The body is exhaust heated and rests on resilient impact absorption pads. Full time exhaust is optional. Body wear surfaces are high hardness (360-440BHN) abrasion resistant steel of yield strength 145,000 lbf/in² (1,000 MPa)

Thickness:	Floor	0.75 in (19 mm)
	Side	0.39 in (10 mm)
	Front, lower	0.39 in (10 mm)

ROPS Cabguard SAE J1040 Feb 86. ISO 3471

Volumes:	Struck (SAE std)	54.4 yd ³ (41.6 m ³)
	Heaped 2:1 (SAE std)	74.5 yd ³ (57.0 m ³)

Service Capacities

Engine crankcase and filters	28.5 gal	(108.0 L)
Transmission and filters	26.0 gal	(100.0 L)
Cooling system	73.0 gal	(276.0 L)
Fuel tank	336.8 gal	(1,275.0 L)
Steering hydraulic tank	16.1 gal	(61.0 L)
Steering hydraulic system (total)	19.0 gal	(72.0 L)
Body hydraulic tank	78.5 gal	(297.0 L)
Body hydraulic and brake cooling system	147.1 gal	(557.0 L)
Planetaries (total)	15.1 gal	(57.0 L)
Differential	16.1 gal	(61.0 L)
Front ride strut (each)	7.1 gal	(27.0 L)
Rear ride strut (each)	4.8 gal	(18.0 L)
Power take off	1.1 gal	(4.0 L)

Weights

Chassis with hoists	114,595 lbs	(51,980 kg)
Body, standard	33,115 lbs	(15,020 kg)
Net Weight	147,710 lbs	(67,000 kg)
Payload, maximum	200,000 lbs	(90,720 kg)
Maximum Gross Weight*	347,715 lbs	(157,720 kg)

For Unit Equipped With Optional Heavy Rock Body:

Chassis, with hoists	114,595 lbs	(51,980 kg)
Body, heavy duty	45,300 lbs	(20,550 kg)
Net Weight	159,895 lbs	(72,530 kg)
Payload, maximum	187,810 lbs	(85,190 kg)
Maximum Gross Weight*	347,715 lbs	(157,720 kg)

*Maximum permissible gross vehicle weight with options, attachments, full fuel tank and payload.

Weight Distribution	Front Axle	Rear Axle	
	Empty	49%	51%
	Loaded	34%	66%

STANDARD EQUIPMENT

General

Accumulator steering	Mud flaps
Air cleaners (2), two stage	Nitrogen inflated tires
Automatic transmission	Operator arm guard
Body down signal	Parking brake (all wheels)
Body heating, exhaust	Radiator, replaceable tube core
Body hoist, servo actuated	Rear view mirrors - 4
Coolant filter	Retarder light - amber, rear
Diagnostic pressure test points	Reverse alarm
Downshift inhibitor	Reversing light- quartz halogen
Dual brake system	Rock ejectors
Electric start	Secondary brake system (all wheels)
Engine pre-lube starter	Security kit
Engine management system	Exhaust muffler (body up)
Engine pan guard	Shed plates, rear tires
Separate steering and body hoist hydraulic systems	Side, tail, stop, direction indicators and hazard warning lights
Exhaust muffler, part time	Tow points, front and rear
Front brake pressure reduction sensor	Transmission guard
Fuel sight gauge	Rear view camera
Horn, dual electric, 117db (SAE J 1105)	Transmission retarder or oil-cooled rear disc brakes
Headlights - quartz halogen (4)	Back-up TV camera

General

Acoustic lining	Tinted glass
Air conditioner R 134A 18,500 BTU/hr (5.4 kW)	Heater and defroster (10.3 kW - 35,000 BTU/hr)
Armrest, operators door	Utility compartment
Door locks	Window, electric - operator's door
Floor mat	Sun visor, full cab width
FOPS protection (ISO 3449)	ROPS protection (body cabguard) (ISO 3471)
Interior light/courtesy light	Front brake pressure reduction selector
Mug holder	Seat, passenger
Radio/cassette player	Seat belts SAE J386
Windshield wipers - 2 speed and washers	Air suspension seat with high back, headrest and 4-point harness
Steering column, adjustable	

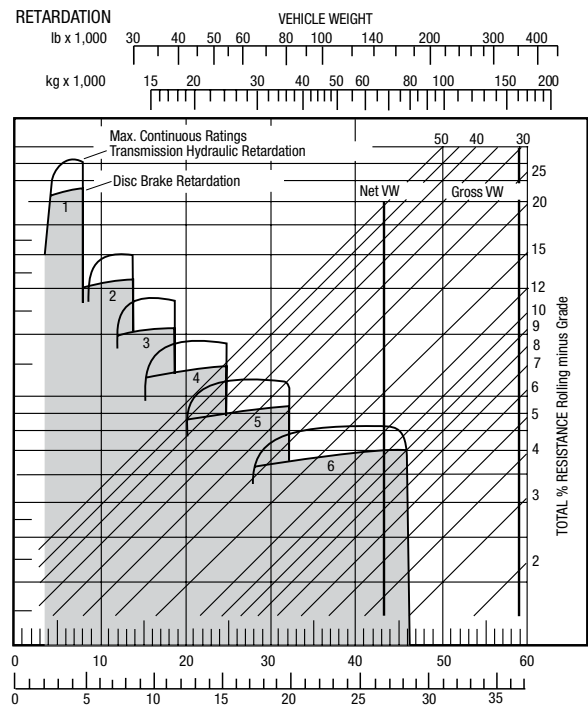
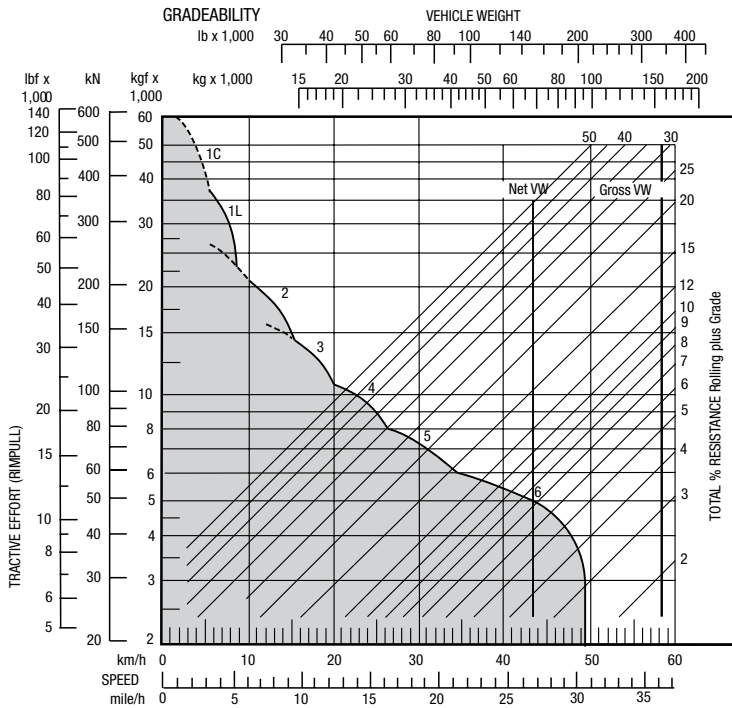
Controls

Battery isolator	Power/economy key switch
Auto transmission shift	Manual mode key switch
Transmission test button	

WORKS FOR YOU.™

PERFORMANCE DATA

Graphs Based On 0% Rolling Resistance



STANDARD EQUIPMENT

Gauges

Converter / Engine coolant temp	Speedometer/odometer
Engine oil pressure	Tach/hourmeter
Fuel	Transmission oil pressure

Indicator Lights & Alarm

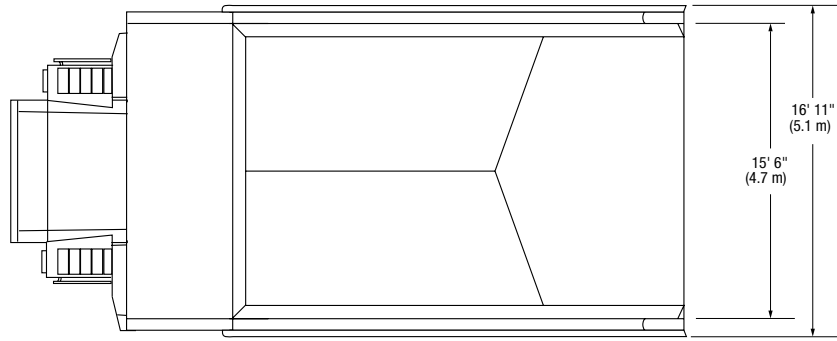
Brake pressure, front & rear	Steering/brakes oil level
Steering pressure	Transmission "do not shift"

Indicator Lights Only

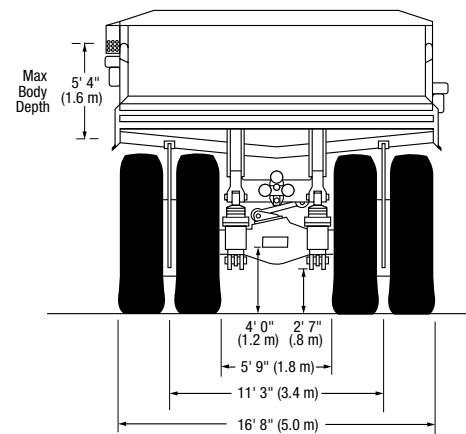
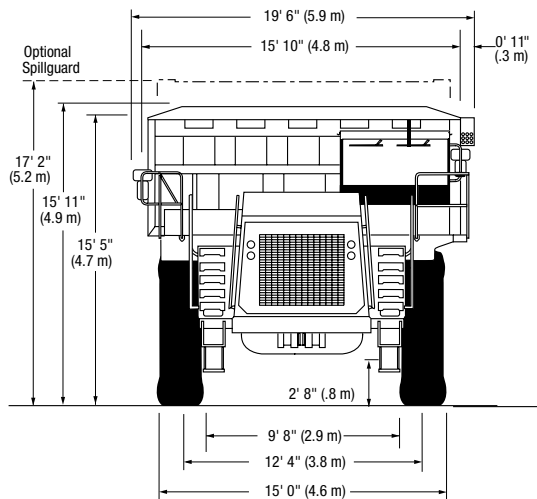
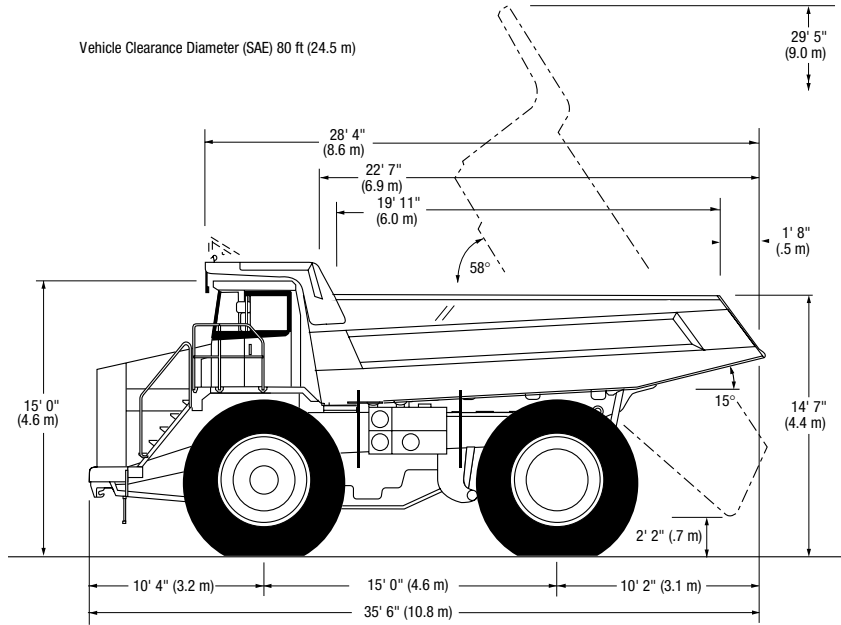
Air cleaner restriction	Headlamps, main beam
Alternator not charging	Parking brake on
Body up	Retarder on
Brake oil temp	Steering filter restriction
Converter drive	Transmission "check"
Coolant level	Transmission filter restriction
Coolant temp	Transmission manual mode
Direction indicators	Transmission oil temperature
Engine oil pressure	Warning light test

DIMENSIONS

TR100



Vehicle Clearance Diameter (SAE) 80 ft (24.5 m)



WORKS FOR YOU.™

OPTIONAL EQUIPMENT

General

Automatic lubrication	Exhaust muffler, full-time	Flashing strobe reverse light	Tool kit, hand
Beacon, flashing amber	Fan clutch	On-board weighing system	Traction bias differential
Body wear plates (floor, end, side and front protection)	Oil drain kit, engine and transmission sumps	Cummins KTA38C non-emission compliant engine for some countries	Custom options may be available upon request
Body, heavy duty	Fast fuel adapter	Planetary ratio 10.5:1	
Cold start kit	Fire extinguisher	Spillguard extension, folding	
Differential, no spin	Fire suppression system	Tachograph	

terex.com

Effective Date: April 2010. Product specifications and prices are subject to change without notice or obligation. The photographs and/or drawings in this document are for illustrative purposes only. Refer to the appropriate Operator's Manual for instructions on the proper use of this equipment. Failure to follow the appropriate Operator's Manual when using our equipment or to otherwise act irresponsibly may result in serious injury or death. The only warranty applicable to our equipment is the standard written warranty applicable to the particular product and sale and Terex makes no other warranty, express or implied. Products and services listed may be trademarks, service marks, or trade names of Terex Corporation and/or its subsidiaries in the USA and other countries. All rights are reserved. Terex is a registered trademark of Terex Corporation in the USA and many other countries. © 2010 Terex Corporation.

8800 Rostin Road, Southaven, MS 38671 USA
1.888.90.TEREX (83739)



WORKS FOR YOU.™